

```
graph TD; President["President  
Ángel Cabrera"]; SeniorVP["Senior Vice President/  
Chief of Staff  
Ronald Johnson"]; InterimProvost["Interim Provost and  
Executive Vice President  
for Academic Affairs  
Karie Davis-Nozemack"]; ExecVPAdmin["Executive Vice President  
Administration and Finance  
and  
Chief Business Officer  
Tricia Chastain"]; ExecVPResearch["Executive Vice President  
for Research  
Timothy Lieuwen"]; President --- SeniorVP; President --- ExecVPAdmin; ExecVPAdmin --- InterimProvost; ExecVPAdmin --- ExecVPResearch;
```

Office of the President

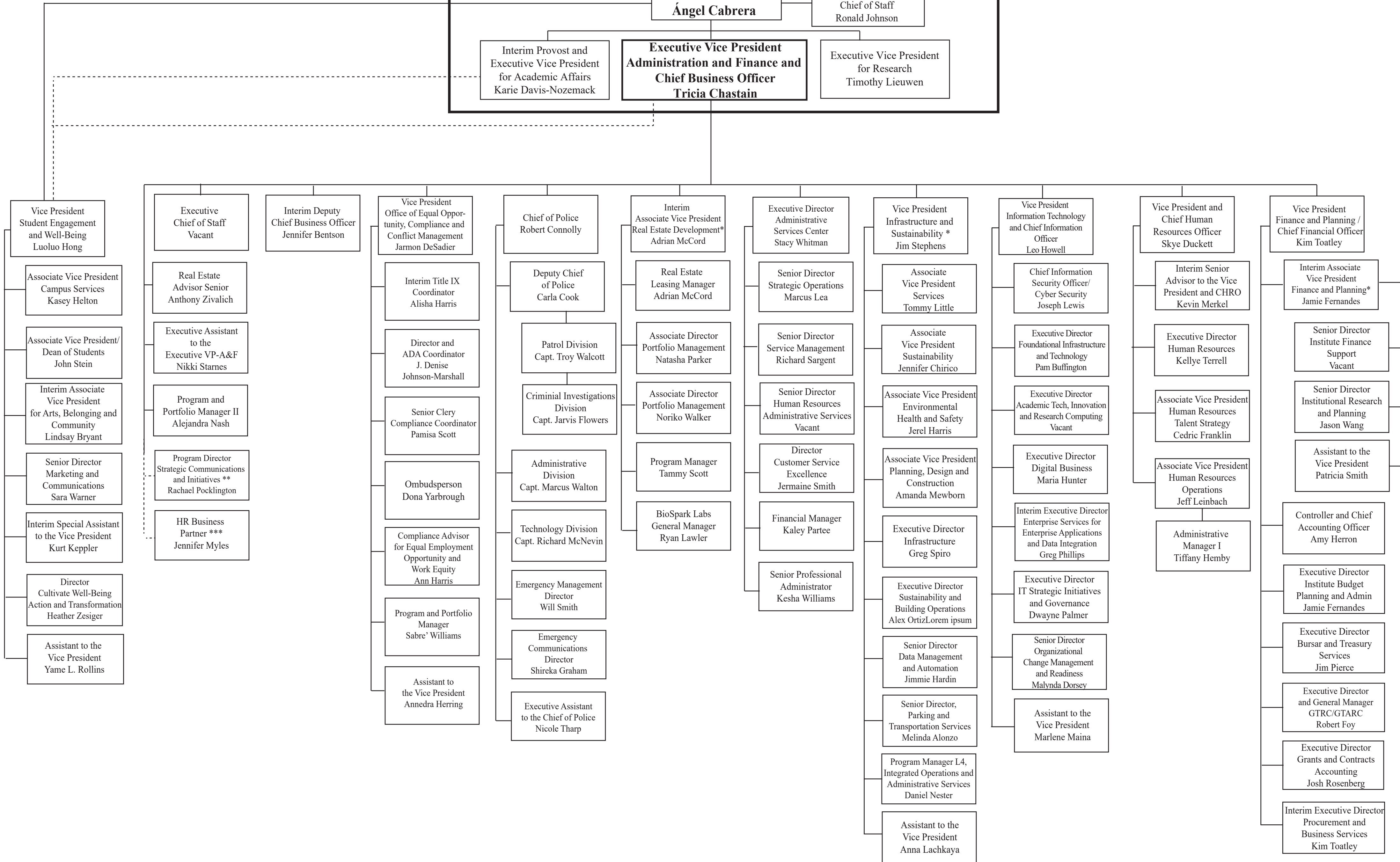
President
Ángel Cabrera

Senior Vice President/
Chief of Staff
Ronald Johnson

Interim Provost and
Executive Vice President
for Academic Affairs
Karie Davis-Nozemack

**Executive Vice President
Administration and Finance
and
Chief Business Officer
Tricia Chastain**

Executive Vice President
for Research
Timothy Lieuwen



* The Associate Vice President for Finance and Planning, the Vice President for Infrastructure and Sustainability, and the Associate Vice President for Real Estate Development share an institutional responsibility for critical areas of facilities planning, finance and budgeting..

** Reports directly to Institute Communications.

*** Reports directly to Human Resources.