

# A&F Connects

## Campus Preparedness + Safety

October 21, 2025

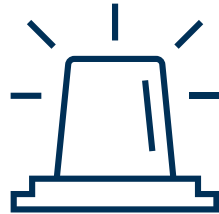


# Role of Emergency Management

- Office of Emergency Management is housed within GTPD
- Works closely with GTPD but also has campuswide responsibilities
- Project managers of emergencies; bridge efforts through relationship building



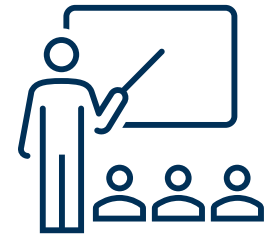
**Emergency +  
Continuity Planning**



**Emergency  
Notification**



**Incident +  
Event Support**



**Training +  
Resources**

# Road Map





A wide-angle, high-angle photograph of a large stadium filled with spectators. The stadium is packed with people, and the field is visible in the center. In the background, a city skyline is visible under a blue sky with scattered white clouds. The text 'Institute Preparedness' is overlaid in a large, bold, dark blue font across the middle of the image.

# Institute Preparedness

Planning + Communications + Incident Response

# Institute Planning



# Planning for the Institute

- Preparedness begins with planning!
- Two main planning types:

## Emergency

How impacted units respond immediately to an emergency to protect life, property, environment

## Continuity

How a unit will continue to execute critical functions regardless of what incident causes a business interruption

- Emergency Response → Continuity Response
  - A cyberattack on the network is an **emergency** that OIT and Institute leadership must resolve.
  - Everyone else must figure out how to have **continuity** of business operations without network access.



# Partners in Planning

- OEM cannot plan alone!
  - Coordinate with our operational partners and Institute leadership to develop comprehensive plans for the Institute and its community.
- Most Common Planning Partners:
  - Infrastructure & Sustainability
  - Institutes Communications
  - Information Technology
  - Campus Services
  - Police
  - Procurement
  - Human Resources
  - Academic Affairs
  - Research
  - Student Engagement & Well Being
  - Athletics





# Emergency Planning

- Focuses on how impacted units respond immediately to an emergency to protect life, property, and environment
- **Redbook**
  - Building-level plans containing emergency procedures, policies, and information
  - All facility managers are to maintain their Redbook(s)
  - Accessible to all GT employees
- **Emergency Operations Plan**
  - Comprehensive document:
    - Institute response framework
    - Roles/responsibilities of campus partners in responding to incidents
    - Procedures, policies, and resources
  - Redacted version is available online.



# Emergency Operations Plan



## Emergency Operations Plan



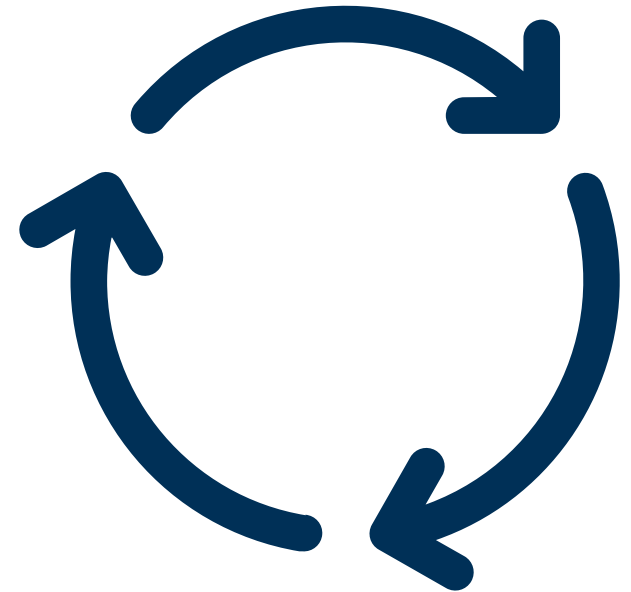
Updated October 2023

- **Base Plan**
  - Authority
  - Scope
  - Concept of Operations
  - Command & Control
- **Emergency Support Functions**
  - ESF-1 Transportation
  - ESF-2 Emergency Communications
  - ESF-3 Infrastructure & Utilities
  - ESF-4 Firefighting
  - ESF-5 Emergency Management
  - ESF-6 Mass Care
  - ESF-7 Resource Management
  - ESF-8 Health & Medical
  - ESF-9 Search & Rescue
  - ESF-10 HazMat
  - ESF-11 Natural Resources
  - ESF-12 Energy
  - ESF-13 Law Enforcement
  - ESF-14 Recovery
  - ESF-15 External Affairs
  - ESF-16 Academic Affairs
  - ESF-17 Research Affairs
  - ESF-18 Network & Information Technology
- **Support Annexes**
  - Emergency Operations Center SA
  - Crisis Communications SA
  - Animal SA
  - Debris Removal SA
  - Emergency Notification SA
  - Family Assistance Center SA
  - Postvention SA
  - Sheltering SA
  - Commodity Distribution SA
- **Incident Annexes**
  - Water Interruption IA
  - Power Interruption IA
  - Severe Weather IA
  - Winter Weather IA
  - Ransomware IA
  - International Travel IA
  - Public Health IA
  - Active Threat IA
- **Appendices**
  - Maps
  - Contact Lists
  - Building Emergency Plans
  - Master MOU/MOA List



# Continuity Planning

- Process to ensure the Institute's essential functions can continue during and after an interruption to business operations.
  - How will we maintain our most critical services?
  - How will you prioritize services?
- Unit-Level Planning
  - Most units on campus have a continuity of operations plan (COOP).
  - Required by Institute policy to develop, maintain **AND** exercise COOP annually.
- Everyone's favorite time of year!



# Special Event Planning

- Large special events bring a different set of hazards
  - Unfamiliar Patrons
  - External Coordination
  - Disturbance
- Work jointly with GTPD to develop security plans for the event
- Identify Institute impacts and coordinate the modification of operations, if necessary

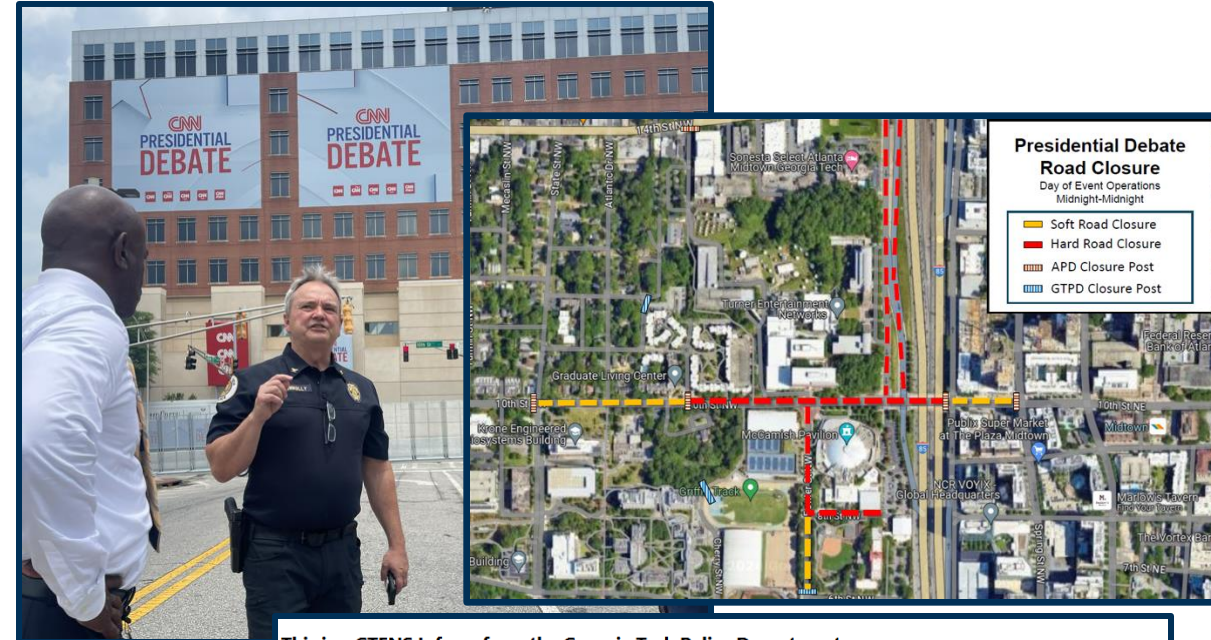




# Special Event Planning

## Presidential Debate – June 2024

- Major Coordination Needed
  - Internal & External Communication
  - Campus Operational Partners
  - US Secret Service
  - CNN/WB Discovery
  - Metro Police Departments
  - FBI/GBI/GSP
- Major Impacts to Campus
  - Road Closures + Restricted Building Access
  - Modified Operations/Digital Learning
  - Residential + Parking Accessibility
  - Security
  - Protests



### This is a GTENS Inform from the Georgia Tech Police Department.

The CNN Presidential Debate will be held on Thursday, June 27th at the Warner Media studios (formerly Turner Networks) on their campus at 10th Street NW & Techwood Drive NW. As part of this event, media will be operating from Georgia Tech's McCamish Pavilion all week.

Expect heavy police presence, road closures, and traffic delays throughout the week, but especially on Wednesday & Thursday.

#### Road Impacts

- 10th Street NW will be closed on Thursday afternoon & evening from State Street to Spring Street.
- Fowler Street NW will be closed on Thursday afternoon & evening from 6th Street NW to 10th Street NW.
- I-75/85 (Connector) will have rolling roadblocks for escorts Thursday evening.

#### Other Events

In addition to the debate, the Campus Recreation Center is hosting the Atlanta Swim Association Championship Wednesday - Friday and Mercedes-Benz Stadium is hosting a Copa America soccer match (USA vs. Panama) on Thursday. All of these events may make travel to and around campus challenging.

#### Campus Impacts

- Parking & Transportation is reaching out to permit holders in *affected* parking areas for relocation instructions.
- The Green Stinger Bus Route will be rerouted on Thursday.
- Housing & Residence Life is reaching out to Family Housing & Graduate Living residents with specific instructions for vehicular & pedestrian access.





# Exercising Plans

- You won't know if a plan works if you don't test it!
  - You don't want that test to take place during the incident.
- Exercises are conducted after a plan is developed.
  - Identified issues are then corrected/added to the plan.
    - After-Action Review/Improvement Plan
- Most Common Types:

## Tabletop

Discussion-based, low stress way to test a plan through a simulated scenario.

## Drill

Operations-based, hands-on way to test the physical execution of a specific operation.

# Exercising Plans



## Tabletop Exercise Examples:

- Winter Weather
- Football
- Crisis Communications
- Executive Leadership
- COOP
- Special Event

## Drill Examples:

- Active Shooter
- GTENS Test
- GTPD Dispatch



# Communications



# Emergency Communications

- Georgia Tech Emergency Notification System (GTENS)
  - Email, Text, Phone, Digital Signage, Website, Social Media, LiveSafe
- **GTENS Emergency!**
  - Issued for imminent threats that require immediate action!

<b>PREFIX</b>	
<b>THREAT</b>	<b>HIGH</b>
<b>PURPOSE</b>	<ul style="list-style-type: none"><li>• Critical Incident</li><li>• Imminent Threat</li><li>• Immediate Action</li></ul>
<b>MODALITY</b>	<ul style="list-style-type: none"><li>• Text</li><li>• Email</li><li>• Phone</li><li>• Social Media</li><li>• Digital Signage</li><li>• Website Banner</li></ul>





# Emergency Communication Challenges

## Challenge:

- Filtering through the noise of an urban environment to only send notifications when it matters to our community.
- Other notification sources:
  - Wireless Emergency Alerts
  - K-12 school notification systems
  - Workplace notification systems
  - Social Media
- Opportunity for overlap, competing messages, confusion
- Manage the community's anxiety level, instill confidence.





# Communication Solution?



- **GTENS Inform**
  - Awareness communication
  - Used for incidents that do not meet the threshold for GTENS Emergency!
  - Incident's proximity, attention, concern may cause anxiety/disruption
  - Received through normal GTENS pathways
- **Feedback on GTENS Inform?**  
✉ [oem@gatech.edu](mailto:oem@gatech.edu)

<b>PREFIX</b>	 <b>INFORM</b> 
<b>THREAT</b>	<b>Low-Moderate</b>
<b>PURPOSE</b>	<ul style="list-style-type: none"><li>• Awareness</li><li>• Critical Incident Nearby</li><li>• No Imminent Threat</li><li>• No Immediate Action</li></ul>
<b>MODALITY</b>	<ul style="list-style-type: none"><li>• Text</li><li>• Email</li><li>• Phone</li><li>• Social Media</li></ul>



# Inform vs. Emergency!

- **GTENS Inform**
  - Less time sensitive
  - More detailed messages
  - No immediate action necessary
- **GTENS Emergency!**
  - Very time sensitive
  - Initial messages less detailed
  - Take immediate action!

<b>PREFIX</b>		
<b>THREAT</b>	Low-Moderate	<b>HIGH</b>
<b>PURPOSE</b>	<ul style="list-style-type: none"><li>• Awareness</li><li>• Critical Incident Nearby</li><li>• No Imminent Threat</li><li>• No Immediate Action</li></ul>	<ul style="list-style-type: none"><li>• Critical Incident</li><li>• Imminent Threat</li><li>• Immediate Action</li></ul>
<b>MODALITY</b>	<ul style="list-style-type: none"><li>• Text</li><li>• Email</li><li>• Phone</li><li>• Social Media</li></ul>	<ul style="list-style-type: none"><li>• Text</li><li>• Email</li><li>• Phone</li><li>• Social Media</li><li>• Digital Signage</li><li>• Website Banner</li></ul>

# Incident Response



# Incident Response



## Project Managers of Emergencies

- Coordinate Institute's response
  - Operational partners are the ones doing the work
- Communications
  - Emergency/Awareness
- Identify units/personnel to mitigate and manage consequences
- Not experts in much of anything!
  - Focus on building relationships with SMEs on campus.

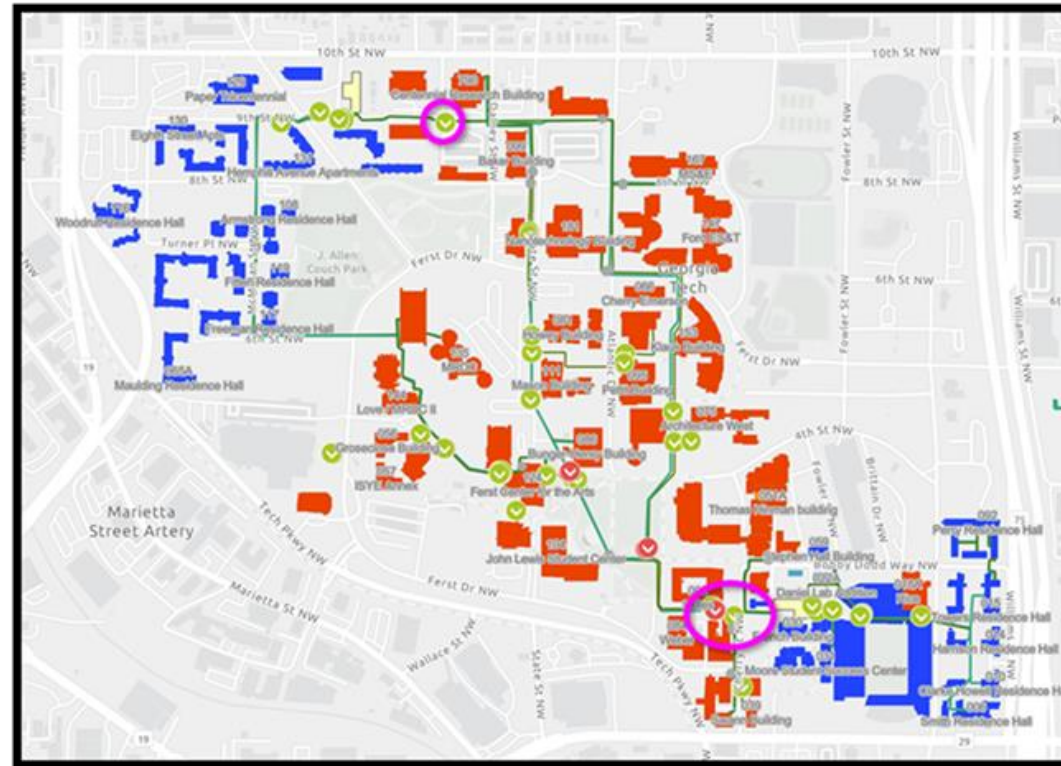




# Chilled Water Outage Response

Friday, July 26, 2024

- Catastrophic leak occurred in Harrison Square
- Significant Impacts:
  - Student Center
  - Library
  - Classroom space
  - BioQuad
  - College of Computing
  - Nanotechnology
  - Electrical Engineering
  - Physics
  - Civil Engineering
  - Degraded cooling elsewhere





# Chilled Water Outage Response

## Consequences to Manage

- I&S was focused on emergency repairs; OEM needed to focus on continuity
- **Continuity Issues**
  - Summer Semester Final Exams
    - Academic Leadership needs to move final exam locations from hot buildings.
  - Research Stability
    - Spot Coolers, Fans, Mobile Chillers
  - Move in begins August 10<sup>th</sup>
    - SEWB needs to plan for impacts to move in & events
  - Fall '24 classes start in August 26<sup>th</sup>
    - Academic Leadership needs to plan for impacts to semester

# Process Comes Together



## Incident Response

### Emergency

- I&S repairs
- Research shutdown
- Property protection
- Animal protection
- Mitigation activities

### Communications

- GTENS
- Facility manager emails/meetings
- Campuswide emails
- I&S website updates

### Continuity

- Final exam shift
- Research stability
- Fall semester start
- Move-In/WoW



# Individual Preparedness

Tips + Training + Resources





# Preparedness Tips

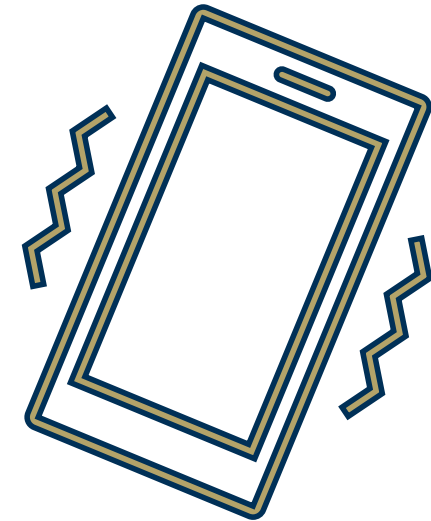
# 3 Steps to Prepare!



**Step 1**  
Build an Emergency Kit



**Step 2**  
Develop Plans + Procedures



**Step 3**  
Be Informed + Educated

# Build an Emergency Kit



- Consider the needs of your household
- 3-Day supply
- Multiple kits
- Maintenance schedule
- Checklist



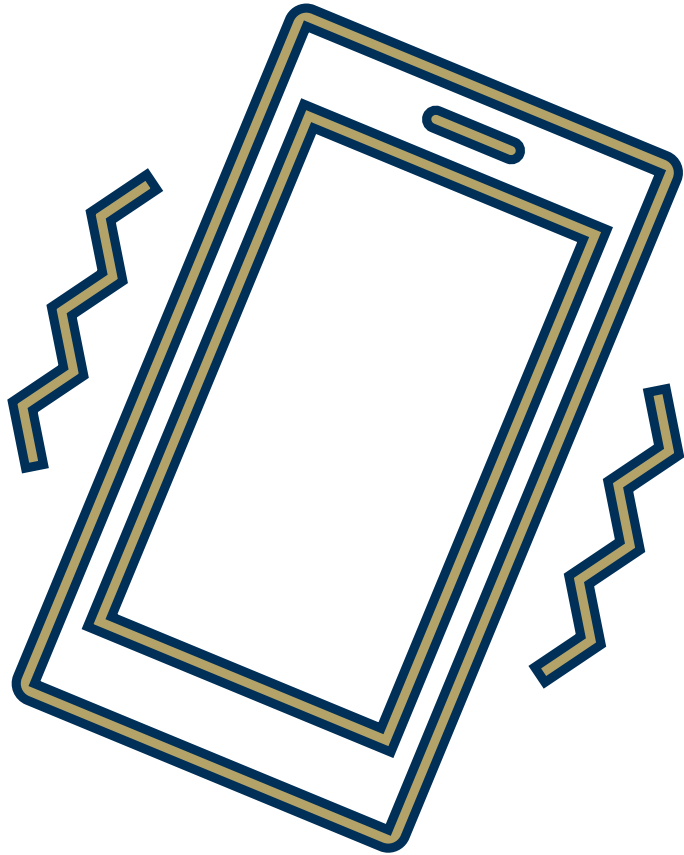


# Develop Plans + Procedures

- Communication plan
- Evacuation plan
- Document + safeguard important information
- Consider different situations
- Review and exercise annually!



# Be Informed and Educated



- Signup for Alerts
  - GTENS
  - Local News
  - WEAs
- Situational Awareness Emails
- Clery Alerts
- Social Media
- COOPs
- Redbooks



# Training + Resources



# Training and Resources

## Trainings

- Crime Prevention 101
- **Civilian Response to Active Shooter**
- Self-Defense
- **Citizen Police Academy**
- First Aid + CPR
- Stop the Bleed
- **Emergency Preparedness 101**
- Micro-Mobility and Bike Safety Class

## Resources

- Open Discussion Forum/Special Request
- Event Weather Forecasting
- Plan Development/Exercise

### Request a GTPD Training

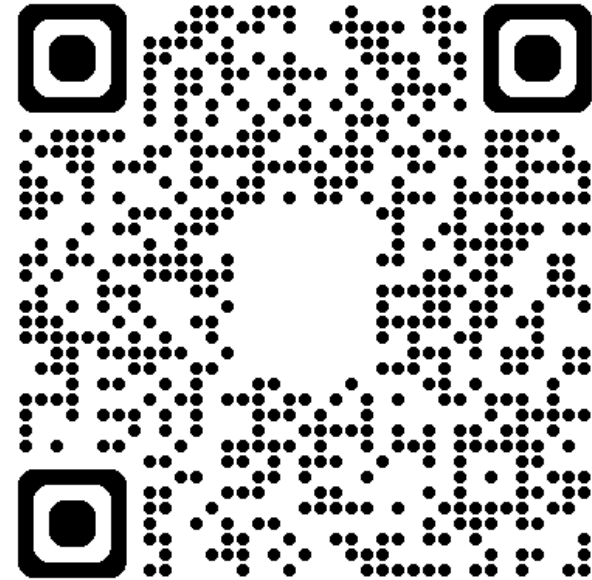




# Contact + Follow

- GTPD Social Media
  - ✕ @GaTechPD
  - 📷 gatechpd
  - 📘 Georgia Tech Police Department
- OEM Social Media
  - ✕ @gtpdalerts
  - 📺 u/GaTechOEM
- Email:
  - ✉ [oem@gatech.edu](mailto:oem@gatech.edu)
  - ✉ [crimeprevention@police.gatech.edu](mailto:crimeprevention@police.gatech.edu)

## Opt-in for Text/Phone GTENS Messages



An aerial photograph of the Georgia Institute of Technology campus. In the foreground, the grey, gabled roof of a building is visible, featuring a prominent brick chimney. The middle ground is filled with lush green trees and various campus buildings. In the background, the Atlanta city skyline is visible under a clear blue sky, with several tall skyscrapers and the Georgia State Stadium. The text "Q&A" is overlaid in the center of the image.

**Q&A**