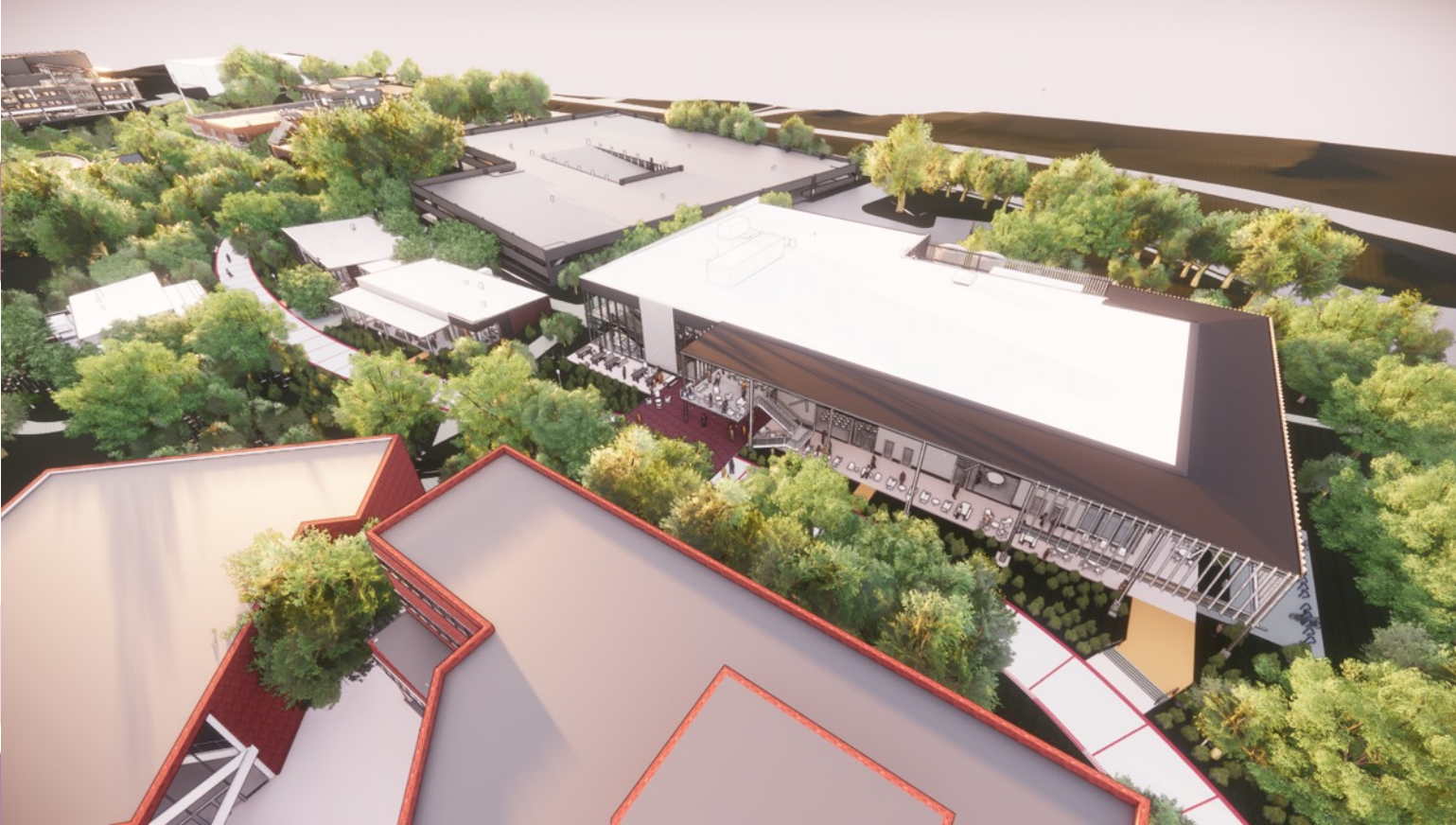


CREATING THE NEXT CAMPUS CENTER

BPN - FALL 2019
PROJECT UPDATE

OVERVIEW



- Phase I update
- Campanile Plaza
- Student Center
- Timeline
- Questions

PHASE I UPDATE

- **Currently under construction**
- **Four new buildings**
- **Expected completion in Summer 2020**



THE EXHIBITION HALL

- Premiere meeting and conference space
- 12,000 ft² ballroom, divisible into 5 smaller spaces
- Catering office & kitchen
- Welcome Desk
- Outdoor lounge & pre-function areas
- 11 meeting rooms



THE PAVILIONS



- Expanded Paper & Clay
- Health Initiatives and the Center for Assessment, Referral, and Education (CARE)
- Café with indoor and outdoor lounge
- Outdoor fireplace

TEMPORARY SPACES



TEMPORARY LOCATIONS DURING PHASE II: (SUMMER 2020 – LATE 2022)

- Half of the ballroom will serve as a food hall (both serveries and seating), the other half will be reservable event space.
- The Post Office will operate from the 2nd floor.
- Kaplan and reflection will have space on the 2nd floor, other meeting rooms will be available to reserve.

TEMPORARY SPACES



- Paper & Clay > DePoe Optical and Burdell's
- Health Initiatives > SC Administrative Office, SCPC
- CARE > Student Engagement Office & student organization support

CAMPANILE PLAZA

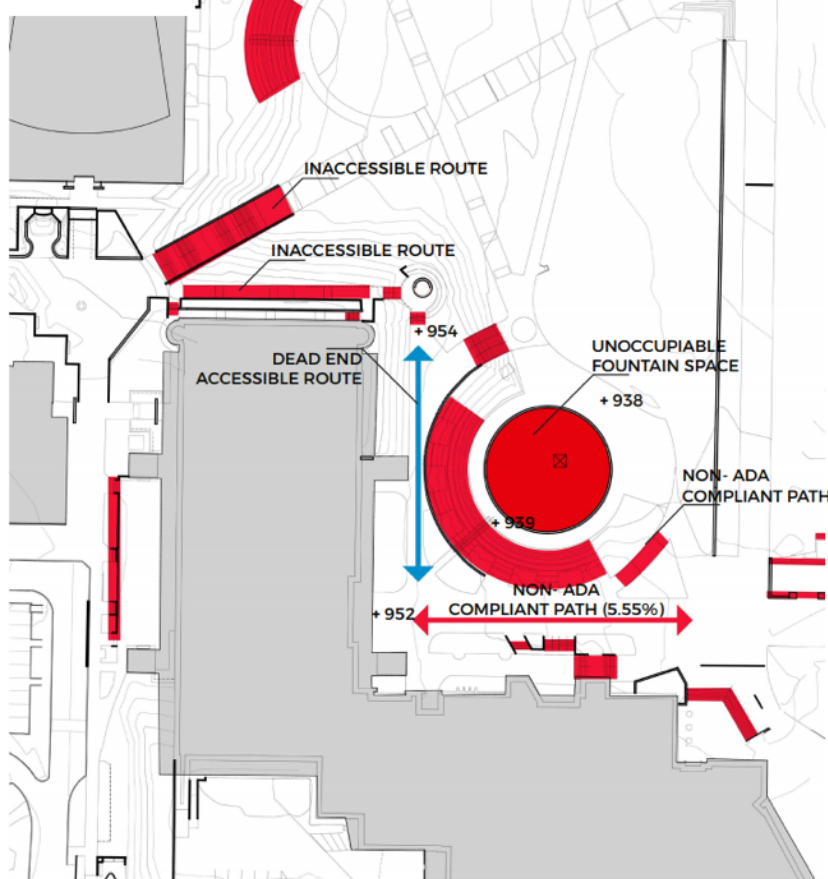
- Will be reconfigured for accessibility
- Will have water!



CAMPANILE PLAZA

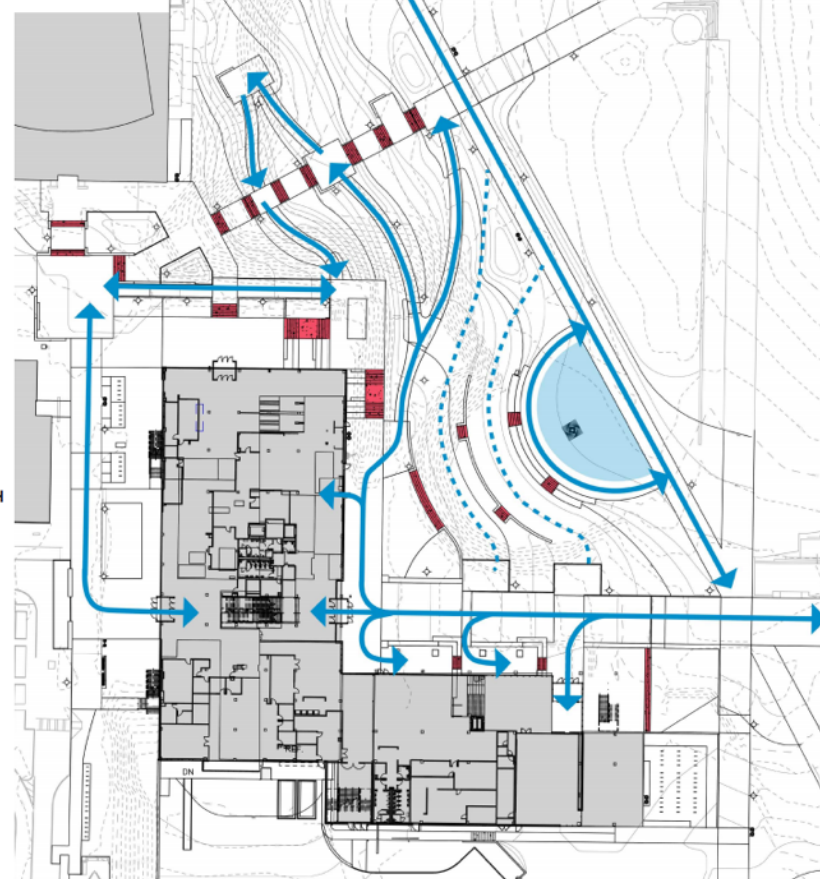
ACCESSIBILITY COMPARISON

EXISTING



■ NON ADA COMPLIANT
— ADA ACCESSIBLE

PROPOSED



■ NON ADA COMPLIANT
— ADA ACCESSIBLE

GILBANE COOPER CARRY WORKSHOP OLIN

CAMPANILE PLAZA



(NEW) STUDENT CENTER

- **Under construction summer 2020 – late 2022**
- **Renovated Wenn**
- **Overhauled Stamps addition**



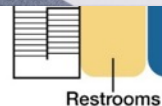
FIRST FLOOR



Restrooms

- Tech Rec
- Post Office (with High-Density Mail)
- Little theater (150 seat)
- Covered porch
- Dining with indoor/outdoor seating

SECOND FLOOR



Publications

Student Org Space

- Food Hall, coffee house
- Welcome Desk
- Burdell's & DePoe Optical
- Student Publications
- MN Practice Rooms
- Expanded student organization space

THIRD FLOOR

Reflection
Space

Meeting
Room



Restrooms SGA LGBTQIA Student Engagement

- Reflection space
- Graduate student lounge
- Multi-cultural space
- LGBTQIA Resource Center
- SGA office
- Large theater (298 seat)
- 5 meeting rooms
- Student Center Administration
- Student Engagement Office
- Expanded student organization space

CONSTRUCTION TIMELINE

PHASE I
Summer 2019 –
Summer 2020
Exhibition Hall, Pavilions

PHASE II
Summer 2020 – Late 2022
Student Center, south addition

Transition to Phase II
May – July 2020
Move out of Student Center into
temporary spaces

QUESTIONS? CONTACT US

Dr. Lindsay Bryant

Senior Director, Student Center

lindsay.bryant@stucen.gatech.edu

Kate Curnow

Communications Manager, Student Center

kate.curnow@stucen.gatech.edu